

Test Report

Report No. RHS01F005645001

Page 1 of 6

Applicant SHENZHEN YONGDING TECHNOLOGY CO.,LTD

Address 10 FLOOR,1 BUILDING,ZHONGTAI SCIENCE PARK,SHANGYOUSONG,LONGHUA TOWN,BAOAN , SHENZHEN CITY, GUANGDONG PROVINCE

The following sample(s) and sample information was/were submitted and identified by/on the behalf of the client

Sample Name

IR INK

Part No.

IR油墨系列:IR-HGS系列、IR-OGS系列、IR-HHL系列、IR-HJS系列、IR-HKS系列、IR-1800光油、IR-1900光油、IR-2000光油、IR-2100光油、IR-FAC系、IR-FBC系列、IR-FCC系、IR-FDC系列、IR-FEC系列、IR-1000光油、IR-1100光油、IR-1200光油、IR-1300光油、IR-1400光油、IR-1500光油、IR-1600光油 助剂系列:HGS-H001A、HGS-H002A、HGS-H003A、HGS-H004A、HGS-H005A、HGS-H006A、HGS-H007A、HGS-H008A、HGS-H0091A CARE-M301、CARE-M302、CARE-M303、CARE-M304、CARE-M305、CARE-M306、CARE-M307、CARE-M308、CARE-M309 CARE-100L、CARE-200L、CARE-300L、CARE-400L、CARE-500L、CARE-600L、CARE-700L、CARE-800L、CARE-900L CARE-601L、CARE-602L、CARE-603L、CARE-604L、CARE-605L、CARE-606L、CARE-607L、CARE-608L、CARE-609L CARE-801L、CARE-802L、CARE-803L、CARE-804L、CARE-805L、CARE-806L、CARE-807L、CARE-8081L、CARE-809L 稀释剂:T-001、T-002、T-003、T-004、T-005、T-006、T-007、T-008、T-009

Sample Received Date

Jun. 24, 2013

Testing Period

Jun. 24, 2013 to Jun. 27, 2013

Test Requested

As specified by client, to test Lead(Pb), Cadmium(Cd), Mercury(Hg), Hexavalent Chromium(Cr(VI)), Polybrominated Biphenyls(PBBs), Polybrominated Diphenyl Ethers(PBDEs), Fluorine(F), Chlorine(Cl), Bromine(Br), Iodine(I) in the submitted sample(s).

Test Method

Please refer to the following page(s).

Test Result(s)

Please refer to the following page(s).

Tested by

Rick Lin

Reviewed by

Vargan He

Approved by

Danny Liu

Date

Jun. 27, 2013

Danny Liu

Technical Manager

No. 1012295154

Centre Testing International (Shenzhen) Co., Ltd. Hongwei Industrial Zone, Bao'an 70 District, Shenzhen, Guangdong, China

Test Report

Report No. RHS01F005645001

Page 2 of 6

Test Method

Test Item(s)	Test Method	Measured Equipment(s)
Lead(Pb)	IEC 62321:2008 Ed.1 Sec.10	ICP-OES
Cadmium(Cd)	IEC 62321:2008 Ed.1 Sec.10	ICP-OES
Mercury(Hg)	IEC 62321:2008 Ed.1 Sec.7	ICP-OES
Hexavalent Chromium(Cr(VI))	IEC 62321:2008 Ed.1 Annex C	UV-Vis
Polybrominated Biphenyls(PBBs)	IEC 62321:2008 Ed.1 Annex A	GC-MS
Polybrominated Diphenyl Ethers(PBDEs)	IEC 62321:2008 Ed.1 Annex A	GC-MS
Fluorine(F)	Refer to BS EN 14582:2007	IC
Chlorine(Cl)	Refer to BS EN 14582:2007	IC
Bromine(Br)	Refer to BS EN 14582:2007	IC
Iodine(I)	Refer to BS EN 14582:2007	IC

Test Result(s)

Tested Item(s)	Result	MDL
Lead(Pb)	N.D.	2 mg/kg
Cadmium (Cd)	N.D.	2 mg/kg
Mercury(Hg)	N.D.	2 mg/kg
Hexavalent Chromium(Cr(VI))	10 mg/kg	2 mg/kg

Tested Item(s)	Result	MDL
Polybrominated Biphenyls(PBBs)		
Monobromobiphenyl	N.D.	5 mg/kg
Dibromobiphenyl	N.D.	5 mg/kg
Tribromobiphenyl	N.D.	5 mg/kg
Tetrabromobiphenyl	N.D.	5 mg/kg
Pentabromobiphenyl	N.D.	5 mg/kg
Hexabromobiphenyl	N.D.	5 mg/kg
Heptabromobiphenyl	N.D.	5 mg/kg
Octabromobiphenyl	N.D.	5 mg/kg
Nonabromobiphenyl	N.D.	5 mg/kg
Decabromobiphenyl	N.D.	5 mg/kg

Test Report

Report No. RHS01F005645001

Page 3 of 6

Tested Item(s)	Result	MDL
Polybrominated Diphenyl Ethers(PBDEs)		
Monobromodiphenyl ether	N.D.	5 mg/kg
Dibromodiphenyl ether	N.D.	5 mg/kg
Tribromodiphenyl ether	N.D.	5 mg/kg
Tetrabromodiphenyl ether	N.D.	5 mg/kg
Pentabromodiphenyl ether	N.D.	5 mg/kg
Hexabromodiphenyl ether	N.D.	5 mg/kg
Heptabromodiphenyl ether	N.D.	5 mg/kg
Octabromodiphenyl ether	N.D.	5 mg/kg
Nonabromodiphenyl ether	N.D.	5 mg/kg
Decabromodiphenyl ether	N.D.	5 mg/kg
Tested Item(s)	Result	MDL
Halogen(s)		
Fluorine (F)	N.D.	10 mg/kg
Chlorine (Cl)	336 mg/kg	10 mg/kg
Bromine (Br)	N.D.	10 mg/kg
Iodine (I)	N.D.	10 mg/kg

Tested Sample/Part Description Deep blue ink

Note: The sample(s) had been dissolved totally tested for Lead, Cadmium, Mercury.

- MDL = Method Detection Limit
- N.D. = Not Detected (<MDL)
- mg/kg = ppm = parts per million

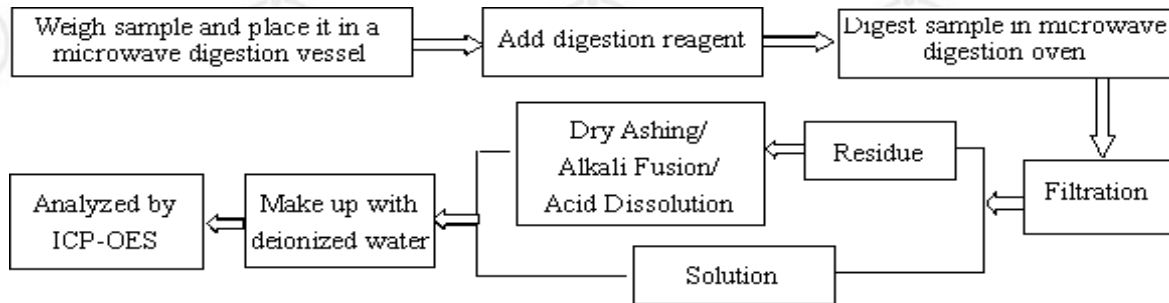
Test Report

Report No. RHS01F005645001

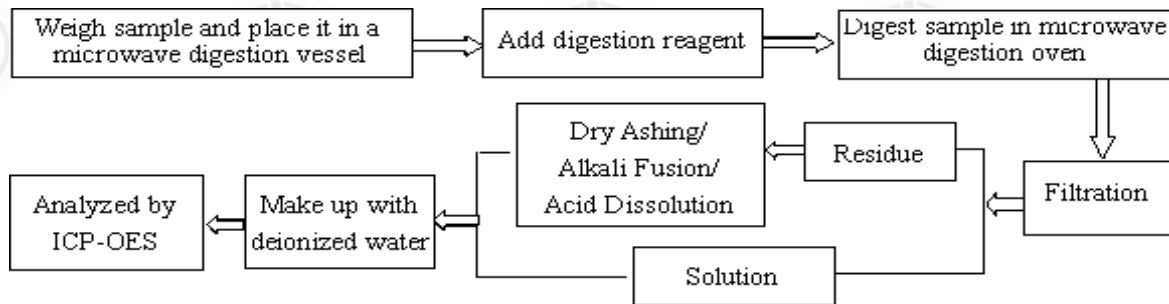
Page 4 of 6

Test Process

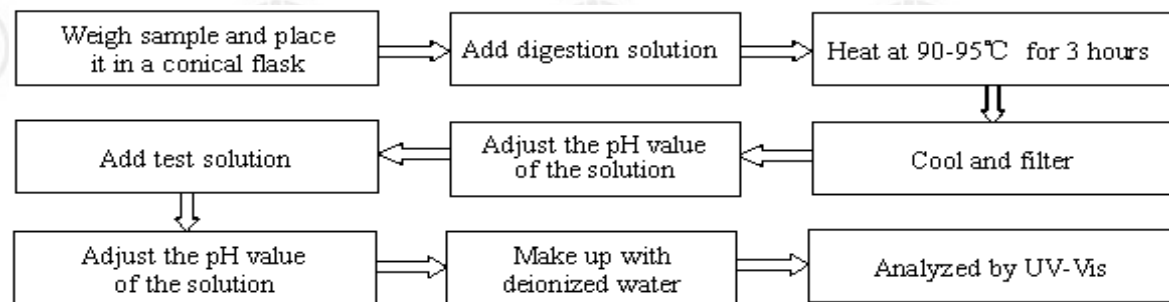
1. Lead(Pb), Cadmium(Cd)



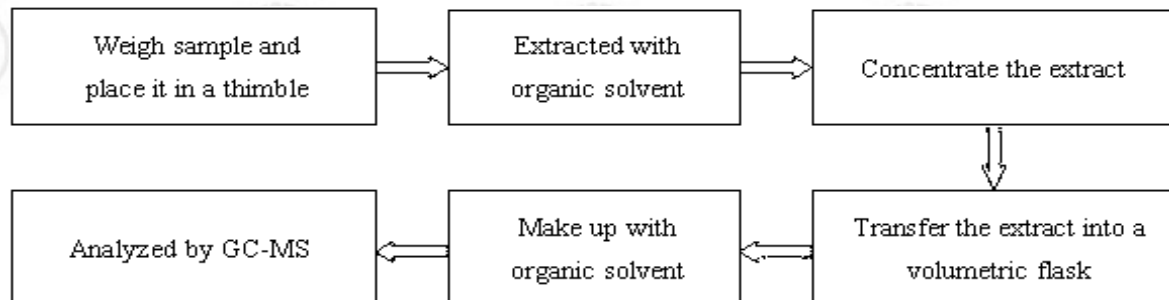
2. Mercury(Hg)



3. Hexavalent Chromium(Cr(VI))



4. Polybrominated Biphenyls(PBBs), Polybrominated Diphenyl Ethers(PBDEs)

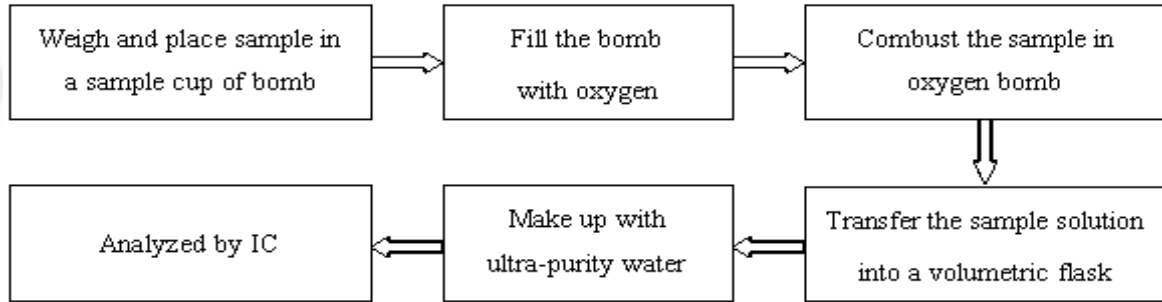


Test Report

Report No. RHS01F005645001

Page 5 of 6

5. Fluorine(F), Chlorine(Cl), Bromine(Br), Iodine(I)

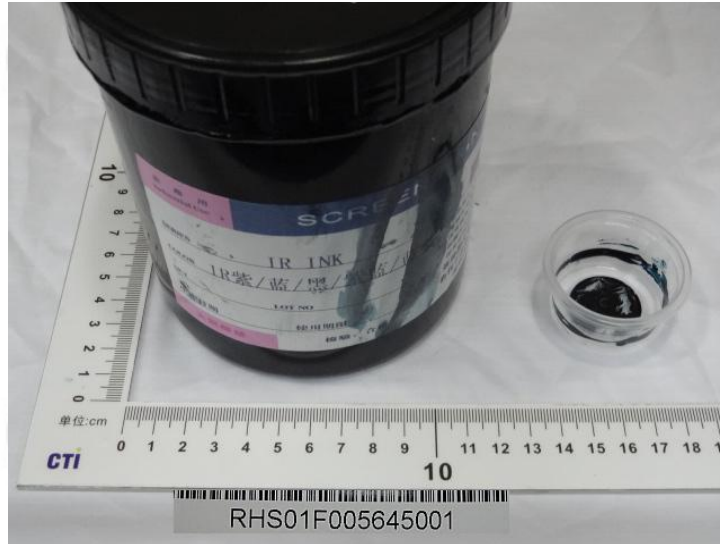


Test Report

Report No. RHS01F005645001

Page 6 of 6

Photo(s) of the sample(s)



*** End of report ***

The test report is effective only with both signature and specialized stamp. The result(s) shown in this report refer only to the sample(s) tested. Without written approval of CTI, this report can't be reproduced except in full.